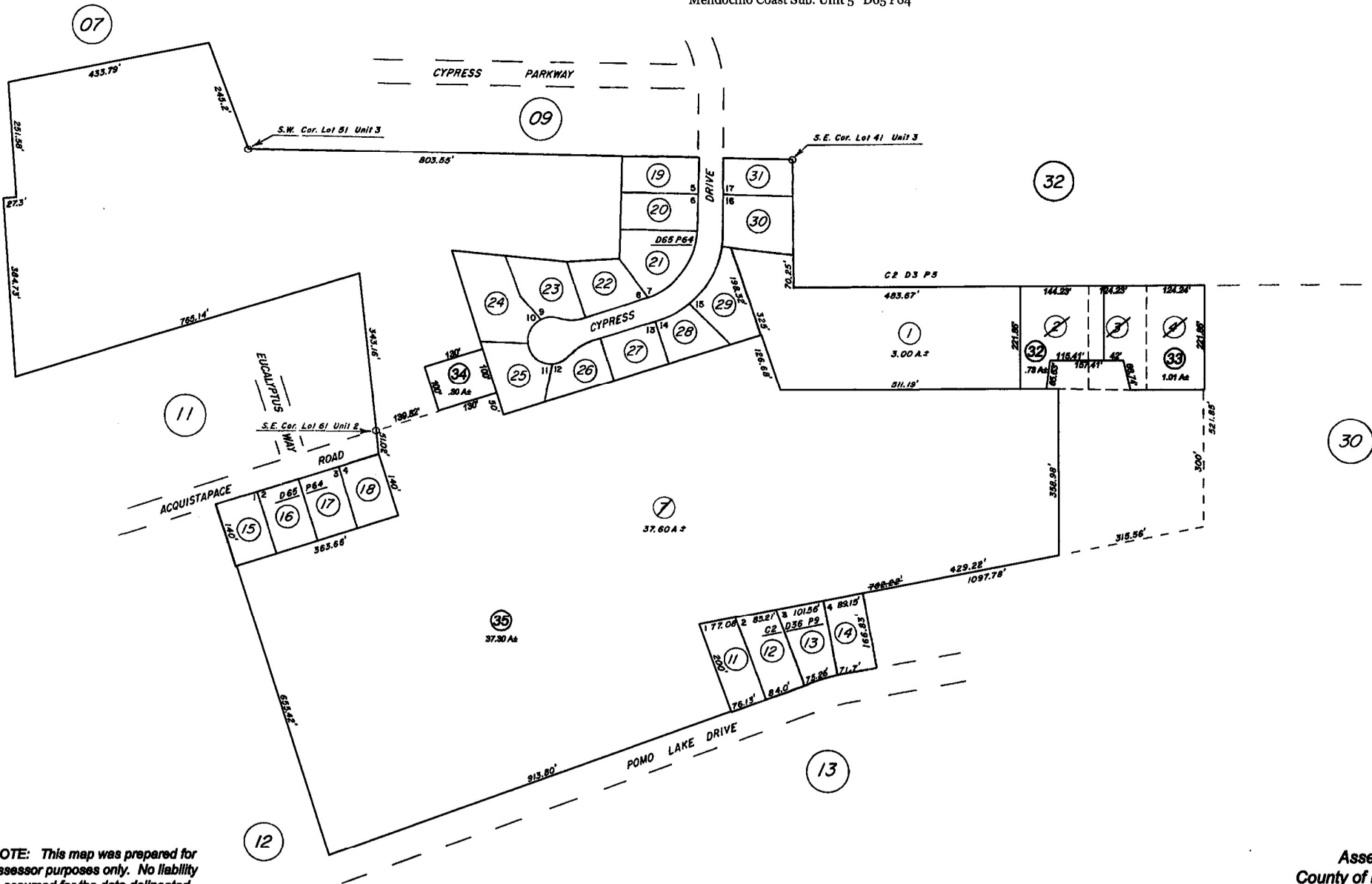


Por. of Sections 1,6,31,36 T.13N. R.17W. M.D.B.& M.

103-008

132-10

Irish Beach Sub. Unit 7-A C2 D36 P9
Mendocino Coast Sub. Unit 5 D65 P64



NOTE: This map was prepared for assessor purposes only. No liability is assumed for the data delineated hereon.

Assessor's Map
County of Mendocino, Calif.
Updated January 14, 2010